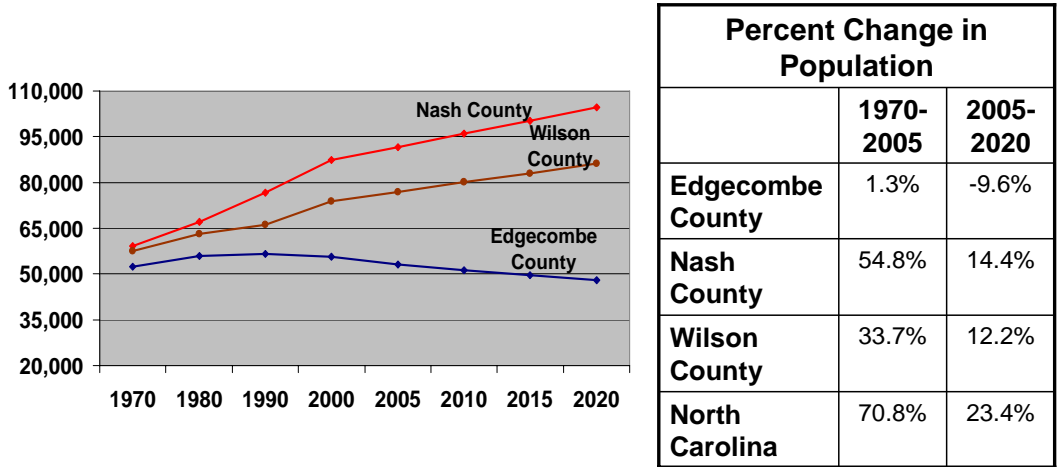


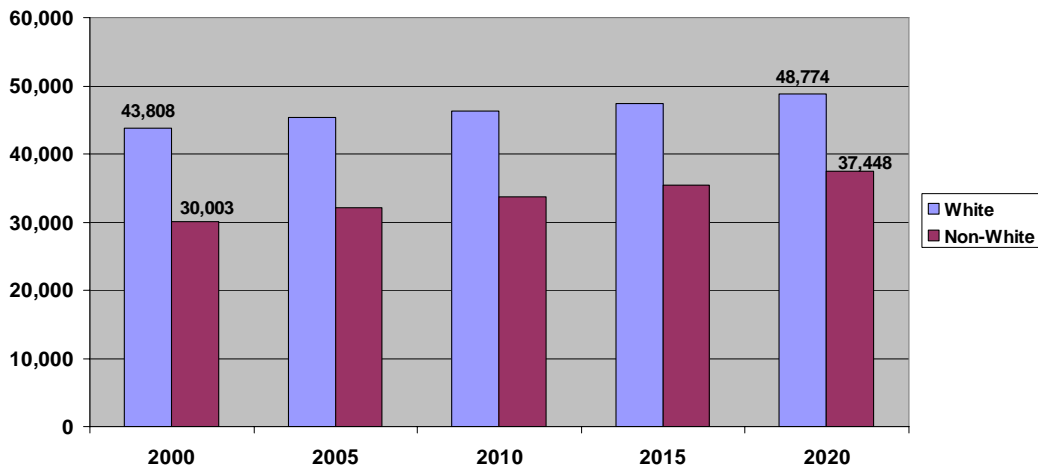
Population and Demographics

Population Growth



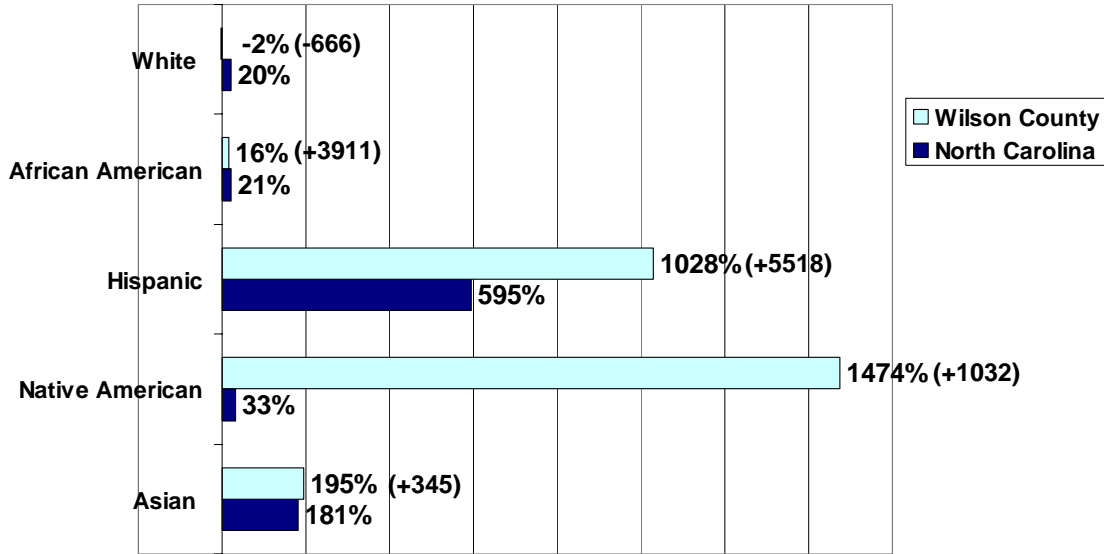
Source: NC State Demographics and U.S. Census Bureau

Population Growth White/Non-White



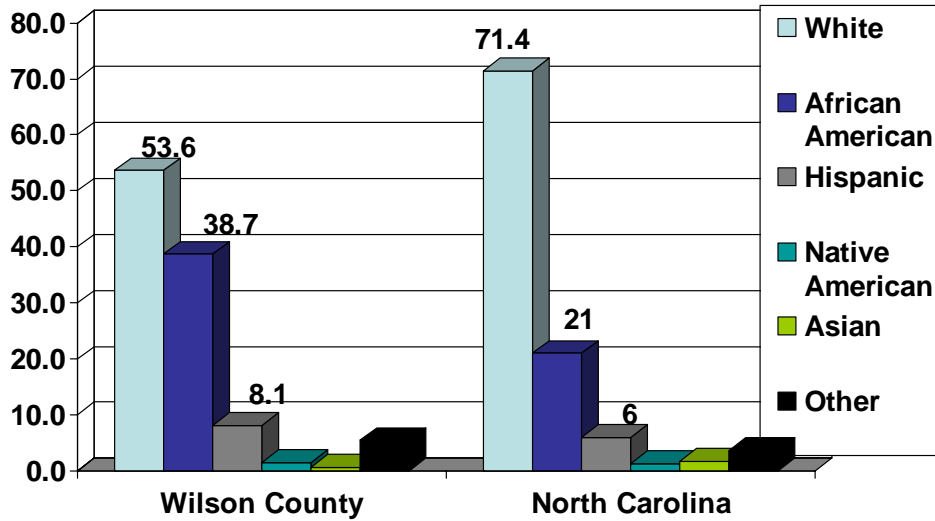
Source: NC State Demographics

Population Growth By Race and Ethnicity, 1990-2005



Source: U.S. Census Bureau, American FactFinder

Percent of Population by Race and Ethnic Origin, 2005



Source: U.S. Census Bureau, American FactFinder

Economy

Five Fastest Growing Industries in NC Employment % Change 2000-2005

Source: NC Employment Security Commission	North Carolina	Wilson County
Health Care and Social Services	21.5%	12.4%
Education Services	19.4%	8.4%
Accommodation and Food Services	11.9%	4.0%
Professional and Technical Services	10.7%	61.8%
Finance, Insurance and Real Estate	10.6%	77.0%

Five Fastest Growing Industries in Wilson County Employment % Change 2000-2005

Source: NC Employment Security Commission	Wilson County	North Carolina	No. New Jobs in Wilson
Finance, Insurance and Real Estate	77.0%	10.6%	565
Professional and Technical Services	61.8%	10.7%	712
Agriculture, Forestry, Fishing and Hunting	18.6%	-6.5%	78
Health Care and Social Services	12.4%	21.5%	514
Arts, Entertainment and Recreation	11.8%	2.8%	28

Declining Industries in Wilson County

Employment % Change 2000-2005

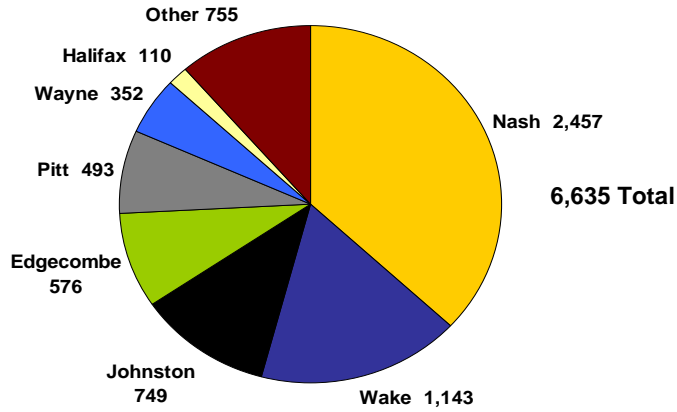
Source: NC Employment Security Commission	Wilson County	North Carolina	Jobs Lost in Wilson
Management of Companies and Enterprises	-55.9%	-25.8%	926
Retail Trade	-12.2%	-1.9%	504
Administrative and Waste Services	-11.4%	-2.7%	273
Manufacturing	-11.2%	-25.0%	1,073
Construction	-2.4%	0.4%	88

Top Employment Sectors in Wilson County

By Average Annual Employment 2005

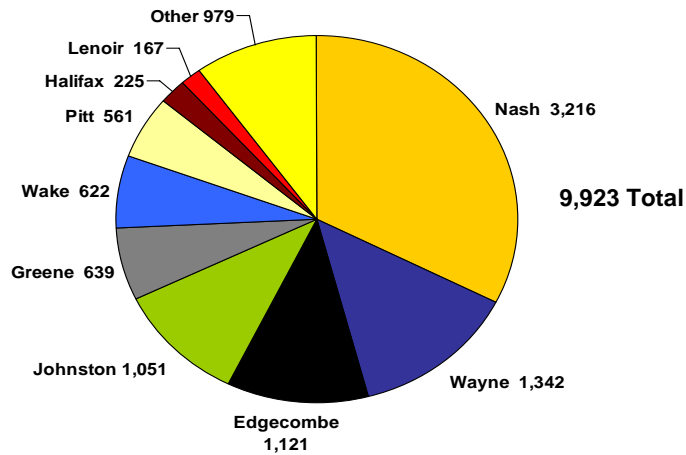
Source: NC Employment Security Commission	Annual Avg. Employment	Annual Wages Paid	Annual Avg. Wage Per Employee
Manufacturing	8,525	\$398,720,621	\$46,770.75
Health Care and Social Assistance	4,673	\$147,922,017	\$31,654.62
Retail Trade	3,619	\$77,510,515	\$21,417.66
Construction	3,550	\$121,301,953	\$34,169.56
Educational Services	2,794	\$85,435,567	\$30,578.23

Workers Commuting to Jobs from Wilson County, 2000



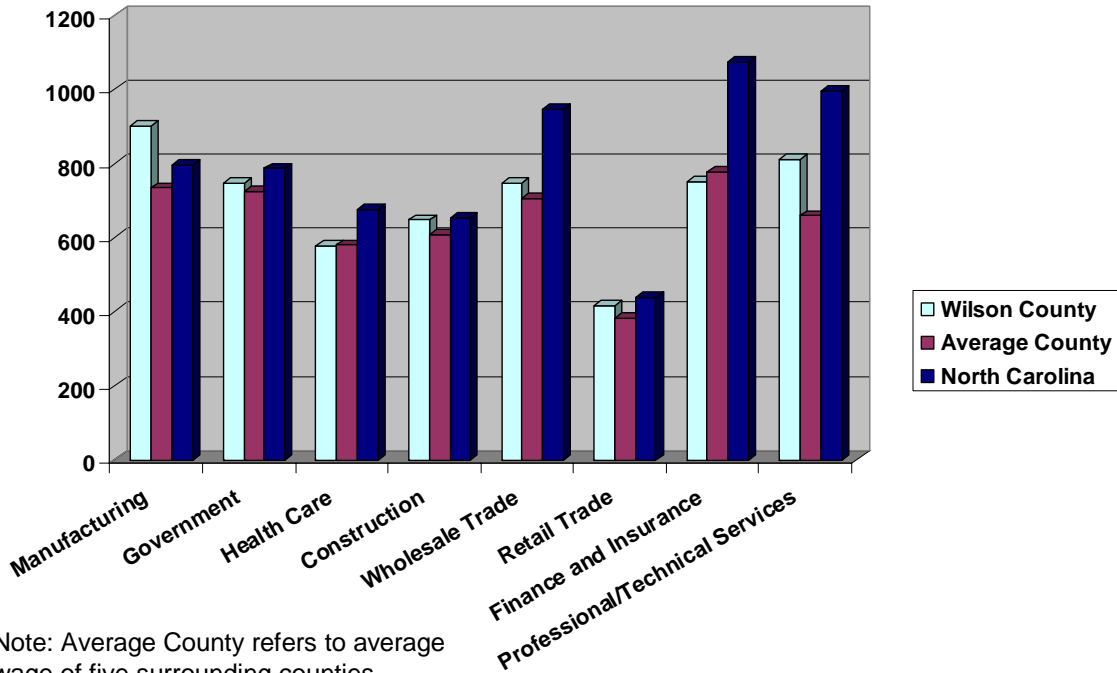
Source: U.S. Census Bureau

Workers Commuting to Jobs in Wilson County, 2000



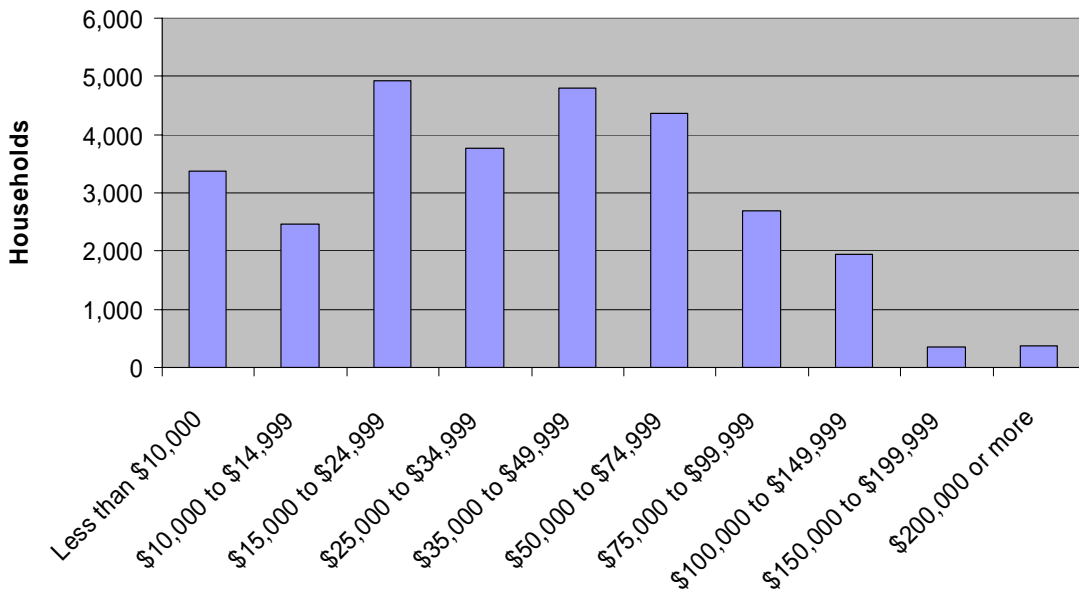
Source: U.S. Census Bureau

Average Weekly Wage Top Employment Sectors, 2005



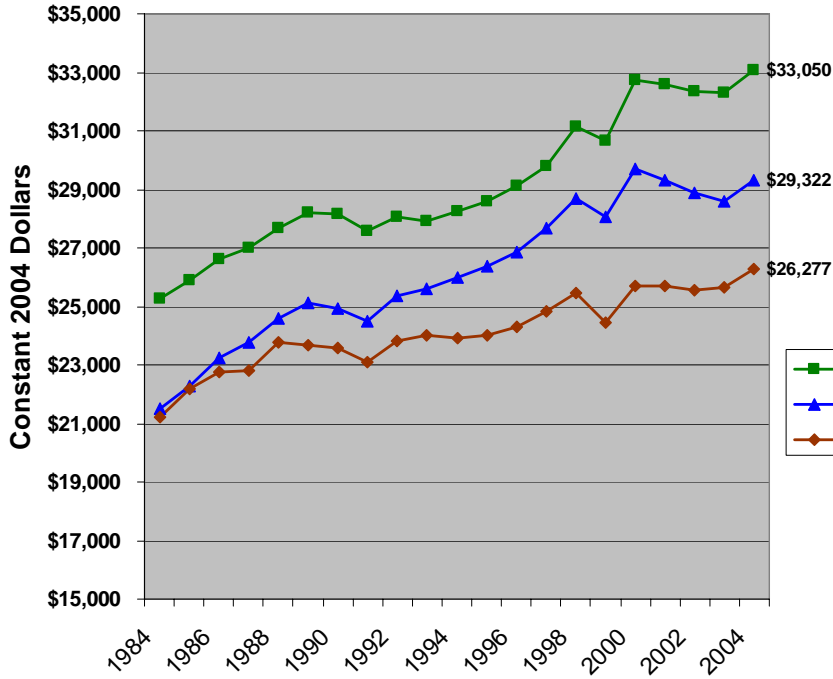
Note: Average County refers to average wage of five surrounding counties.
Source: NC Department of Commerce, County Profiles

Wilson County Income Distribution, 2005



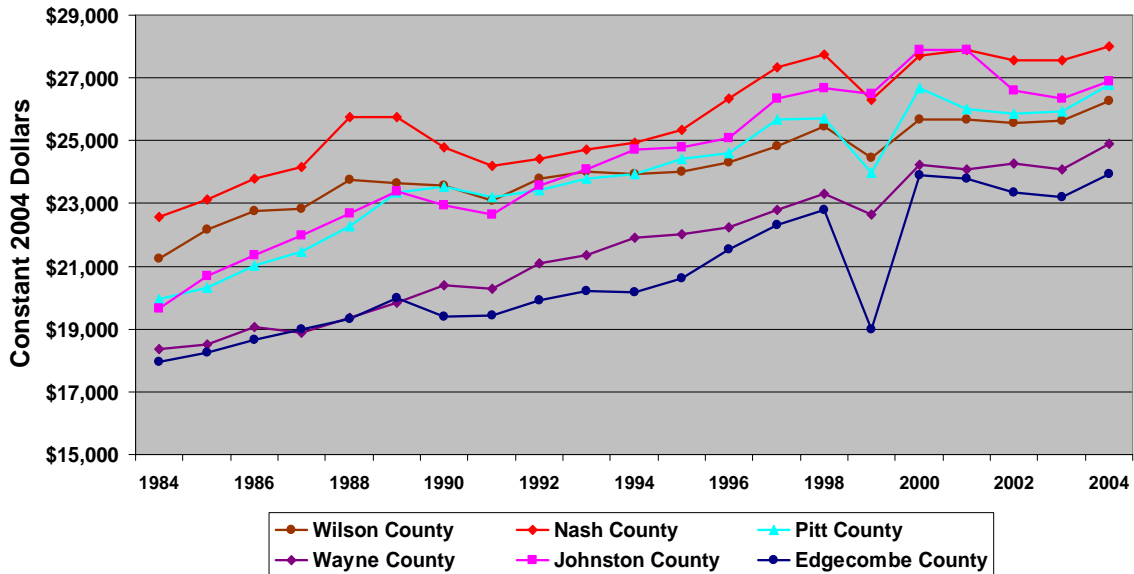
Source: U.S. Census Bureau

Per Capita Income, 1984-2004



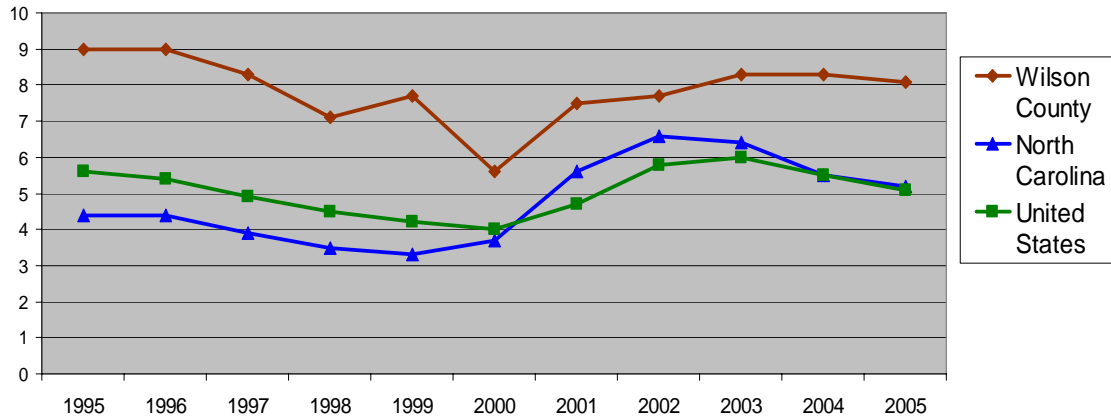
Source: Bureau of Economic Analysis

Per Capita Income Regional Comparison, 1984-2004



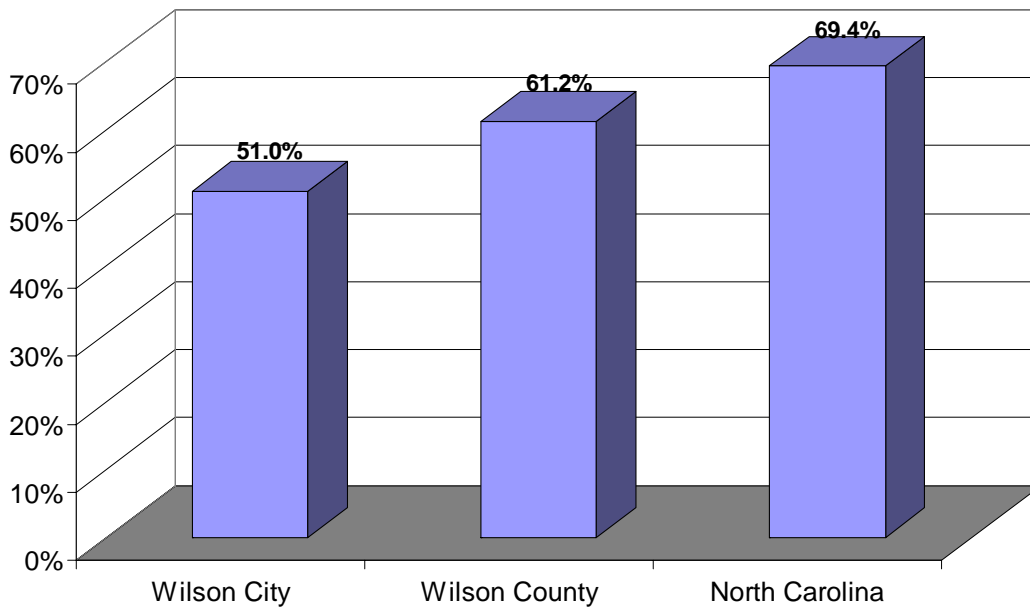
Source: Bureau of Economic Analysis

Unemployment Rate, 1995-2005



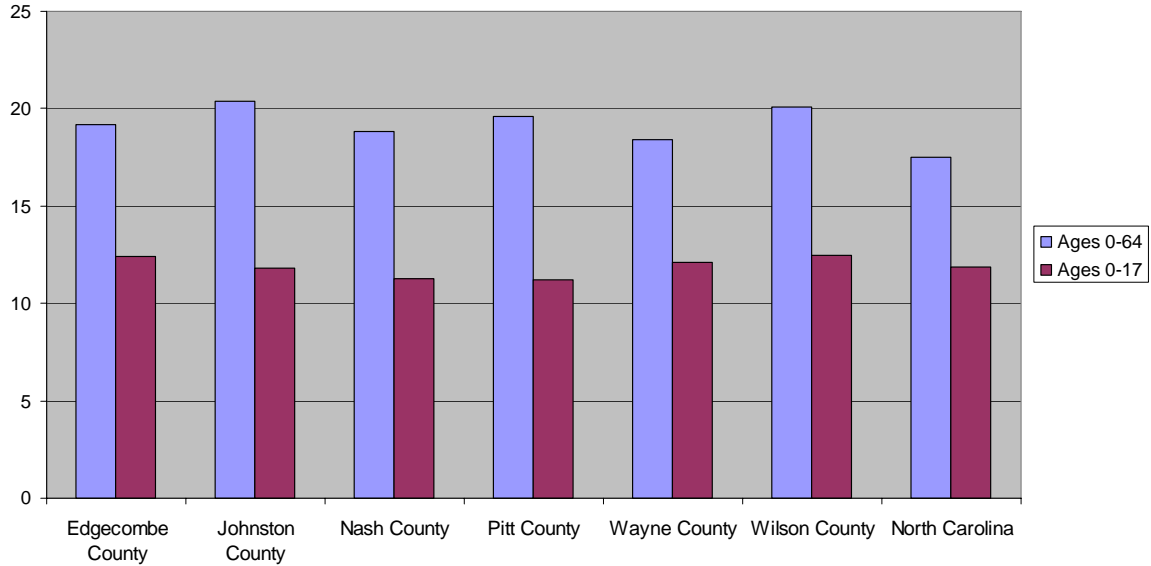
Source: U.S. Bureau of Labor Statistics

Home Ownership Rates, 2000



Source: U.S. Census Bureau

Percent Uninsured, 2004



Source: UNC-Sheps Center for Health Services Research

Measures of Poverty

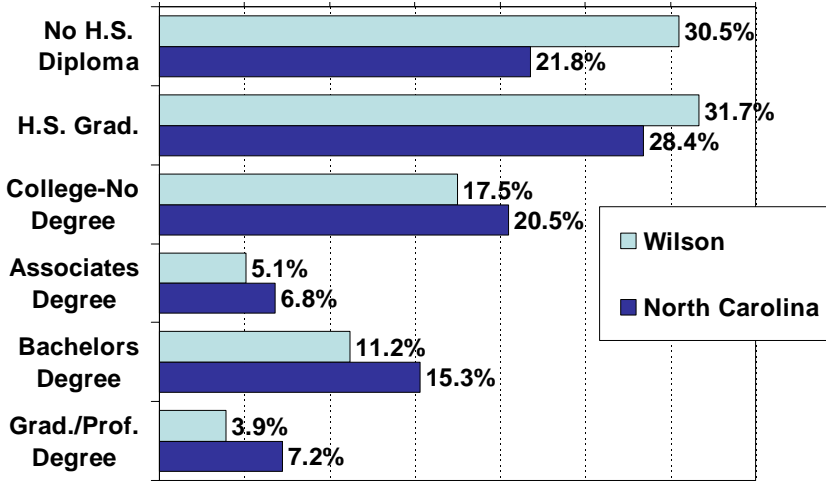
Percent Population below Poverty Level, Subsidized Lunches, 1995-2003

	1995	1997	1999	2001	2003	% Receiving Free/Reduced Priced Lunches 2004-2005
Wilson County	19.4	18.7	16.8	15.7	16.7	69
North Carolina	13.1	12.6	12.3	11.9	13.4	48

Source: U.S. Census Bureau

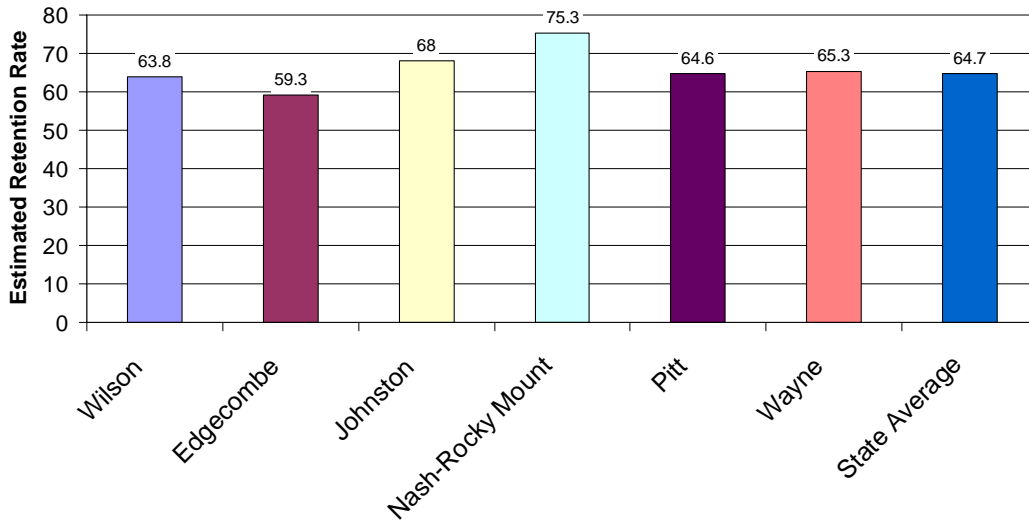
Education and Workforce

Educational Attainment, 2000



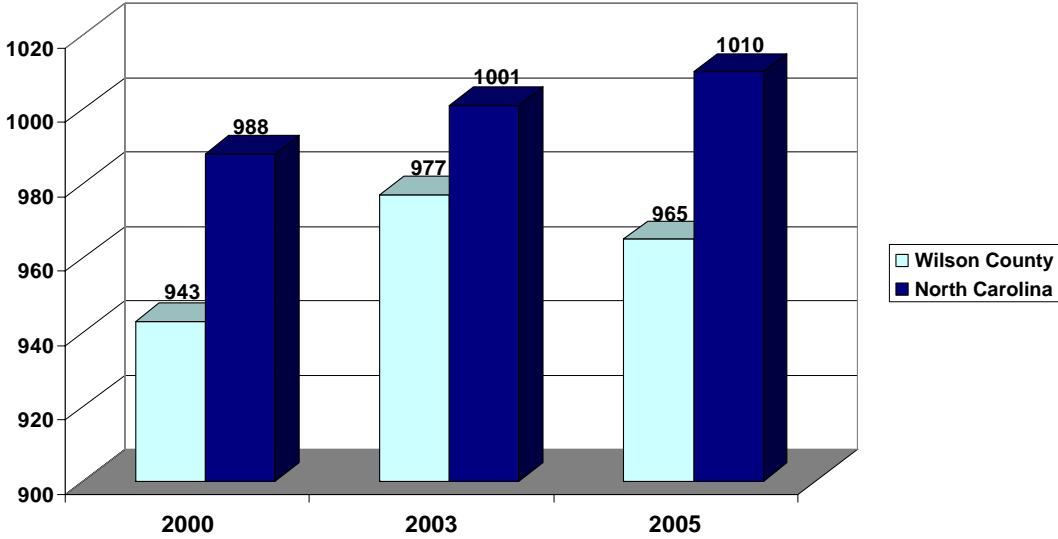
Source: U.S. Census Bureau

High School Retention Rates, 2004-05



*Retention rate is the ratio of graduates in current year to ninth grade final enrollment four years earlier.
Source: North Carolina Public Schools Statistical Profile

Average SAT Scores



Source: NC Department of Public Instruction

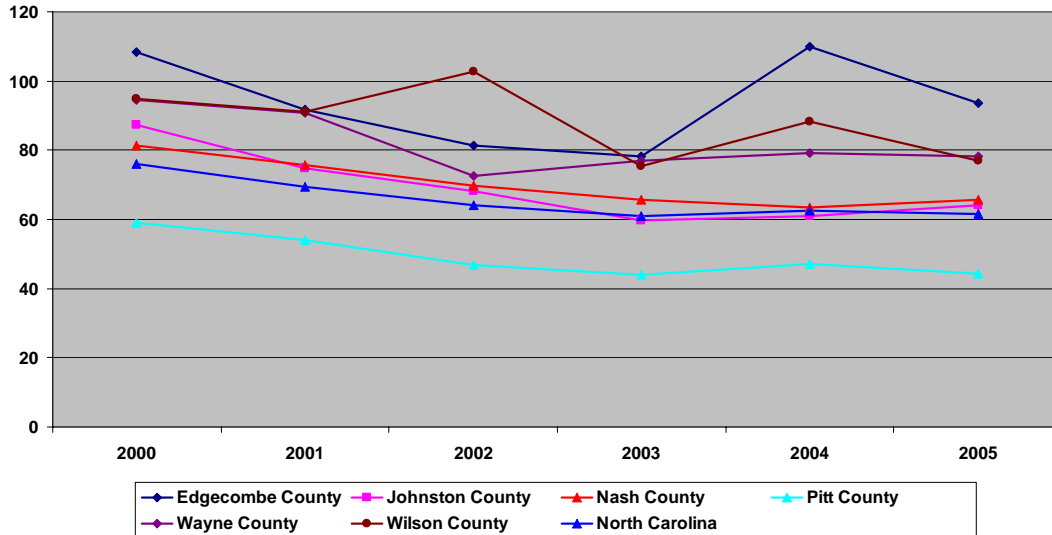
SAT: Percent Tested

	Wilson County	North Carolina
2000	51	64
2003	46.5	68
2005	48.6	79

Source: NC Department of Public Instruction

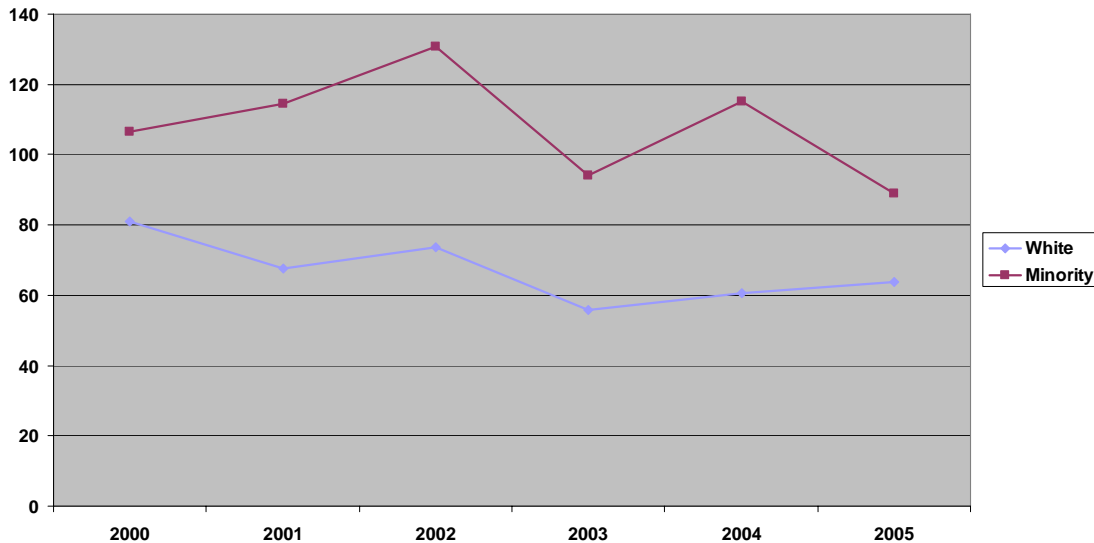
Social Indicators

Teen Pregnancy Rates (Ages 15-19)



Note: Rate is number of pregnancies per 1,000 women ages 15-19
 Source: NC State Center for Health Statistics

Teen Pregnancy Rates by Race Wilson County (Ages 15-19)



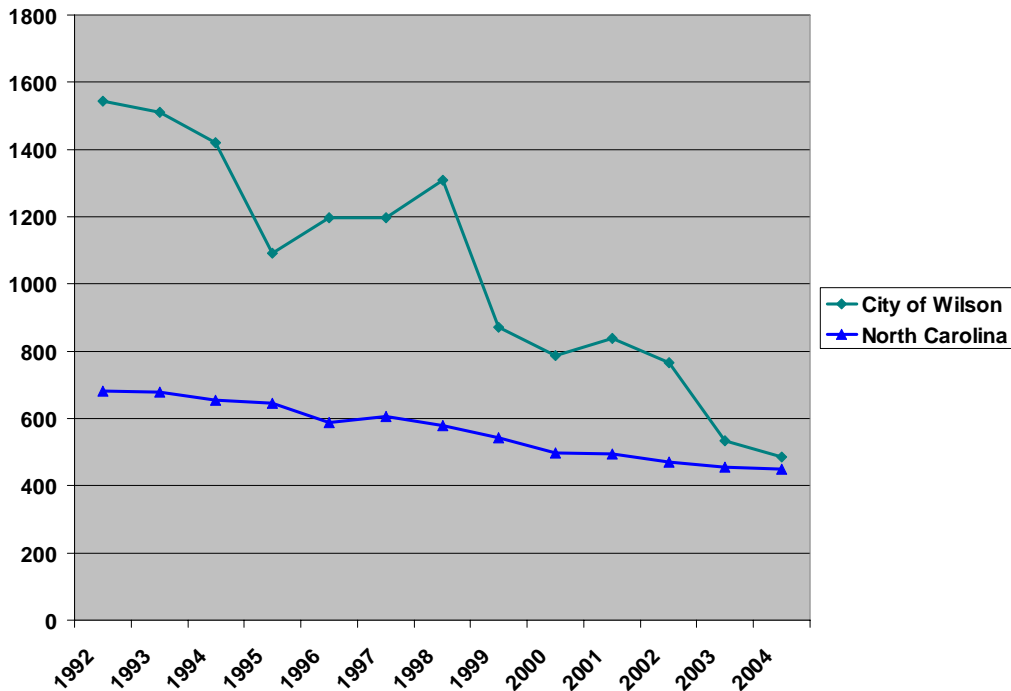
Note: Rate is number of pregnancies per 1,000 women ages 15-19
 Source: NC State Center for Health Statistics

2004 Crime Rates

	City of Wilson	North Carolina
Violent crime	486.6	447.8
Murder and nonnegligent manslaughter	23.6	6.2
Forcible rape	32.2	27.4
Robbery	188.6	137.9
Aggravated assault	242.2	276.2
Property crime	5382.3	4160.2
Burglary	1277.5	1184.8
Larceny theft	3761.8	2659.4
Motor vehicle theft	343	316

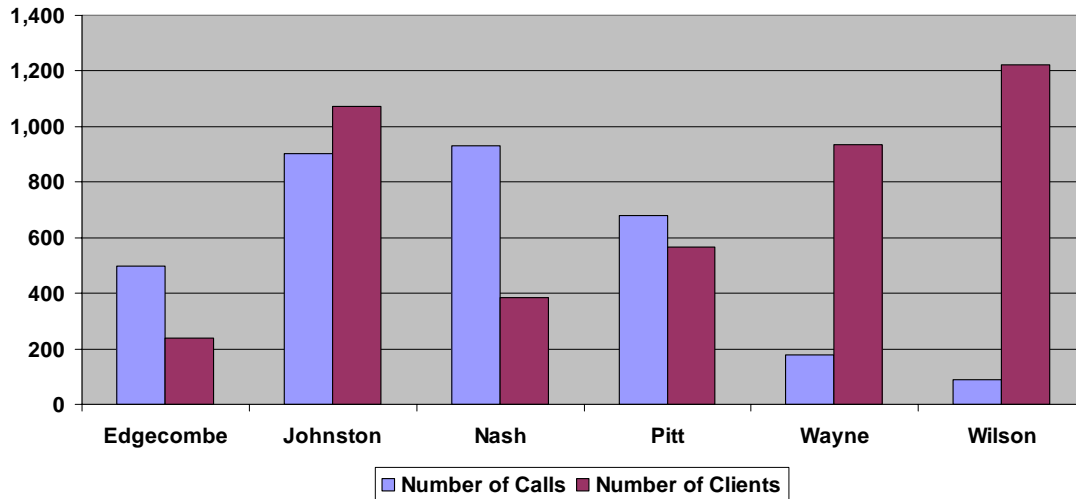
Note: Rate is the number of offenses per 100,000 population
 Source: U.S. Department of Justice

Violent Crime Rate, 1992-2004



Note: Rate is the number of offenses per 100,000 population
 Source: U.S. Department of Justice

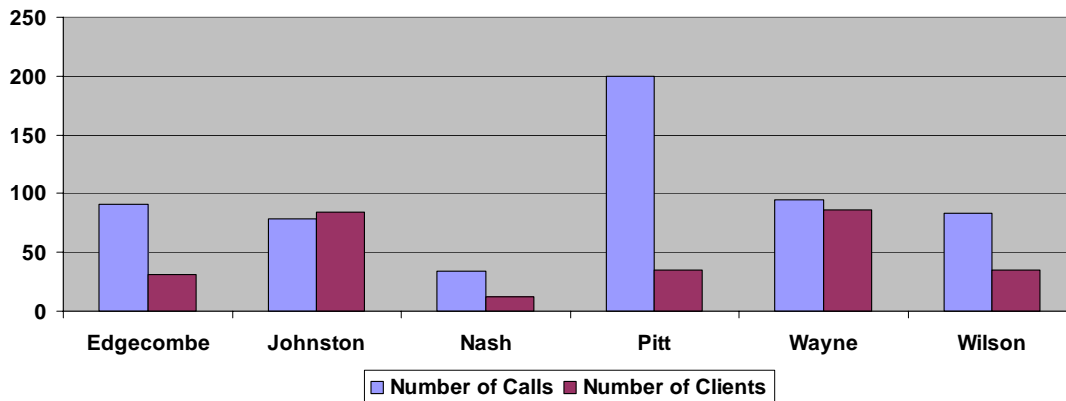
Domestic Violence by County, 2004-2005



Note: Number of calls represents annual calls to county domestic violence hotline. Number of clients represents number of clients served by county domestic violence agency.

Source: NC Council for Women and Domestic Violence Commission

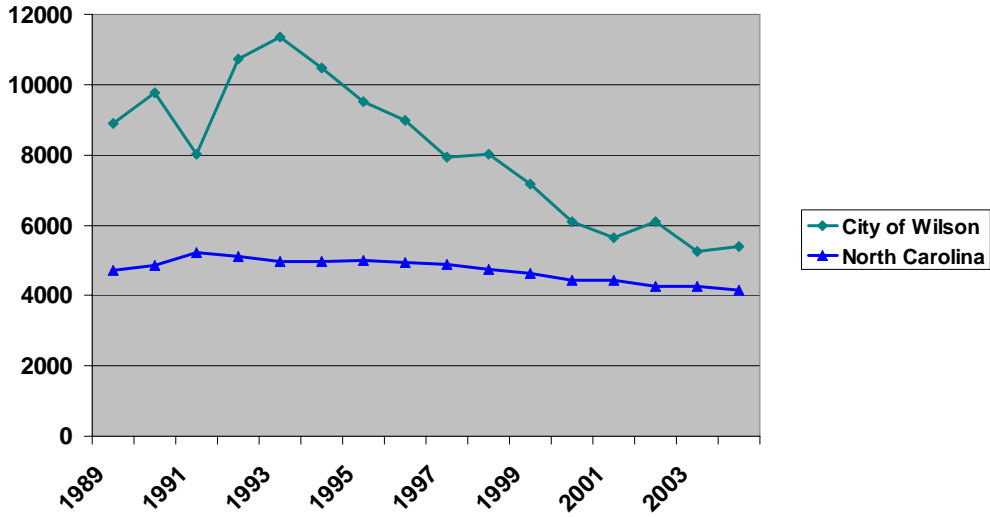
Sexual Assault by County, 2004-2005



Note: Number of calls represents annual calls to county sexual assault hotline. Number of clients represents number of clients served by county sexual assault agency.

Source: NC Council for Women and Domestic Violence Commission

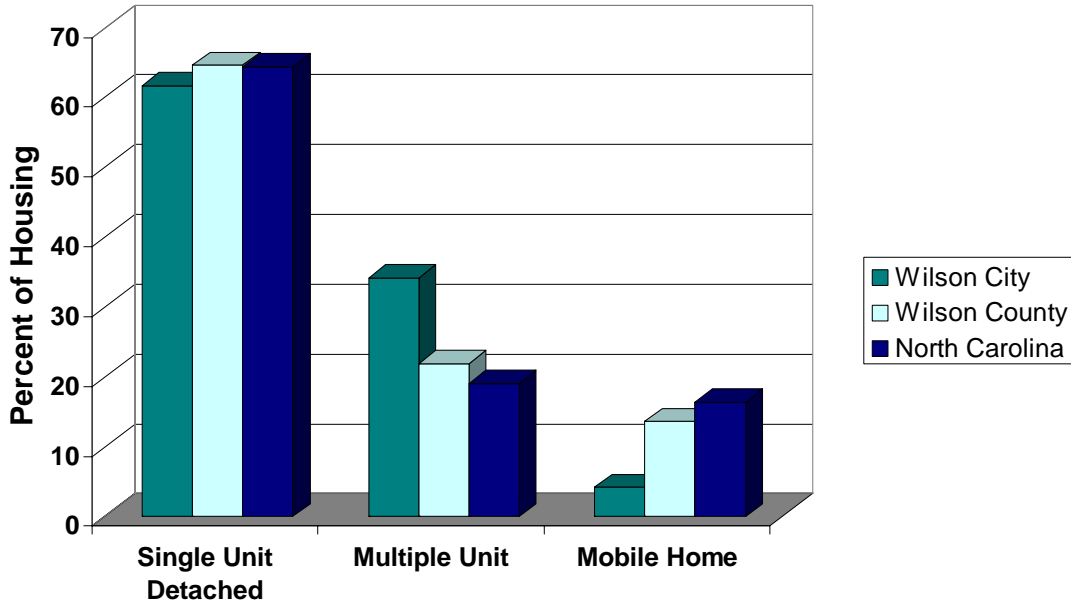
Property Crime Rate, 1989-2004



Note: Rate is the number of offenses per 100,000 population
Source: U.S. Department of Justice

Quality of Life

Housing Type, 2000



Source: U.S. Census Bureau

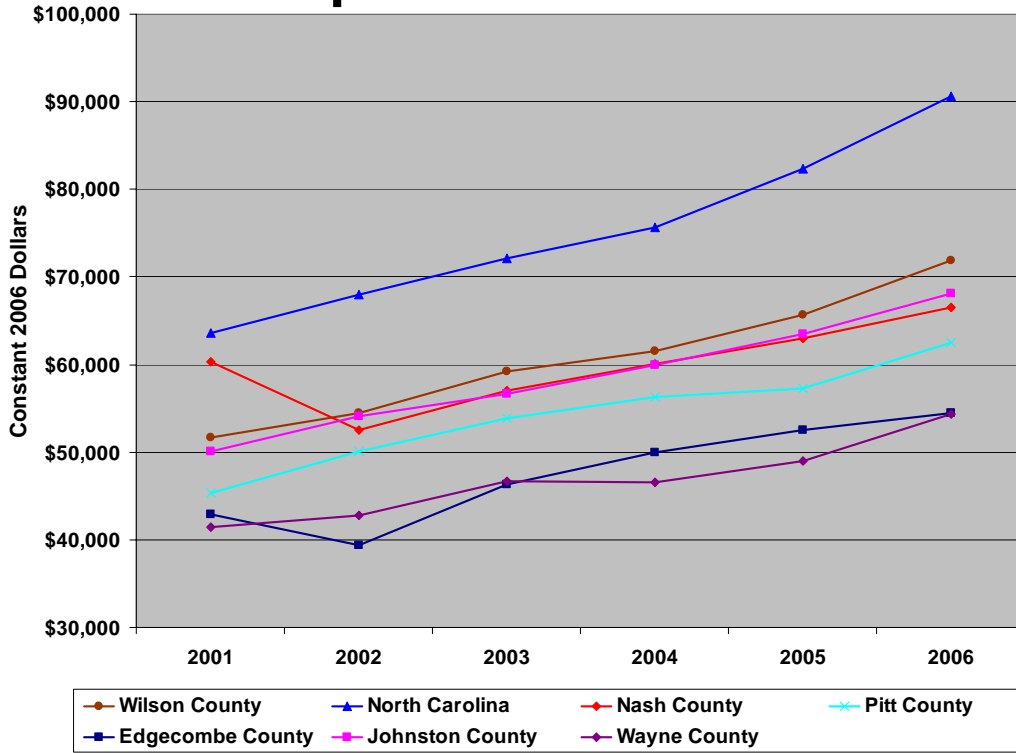
Availability of Health Services, 2004

	Wilson	Edgecombe	Nash	Pitt	Wayne
Population-to-Physician ratio	720:1	1,415:1	514:1	231:1	627:1
Population-to-RN ratio	123:1	197:1	102:1	56:1	117:1
Population-to-dentist ratio	3,634:1	7,682:1	2,012:1	2,564:1	2,669:1

Source: NC Department of Commerce, County Profiles

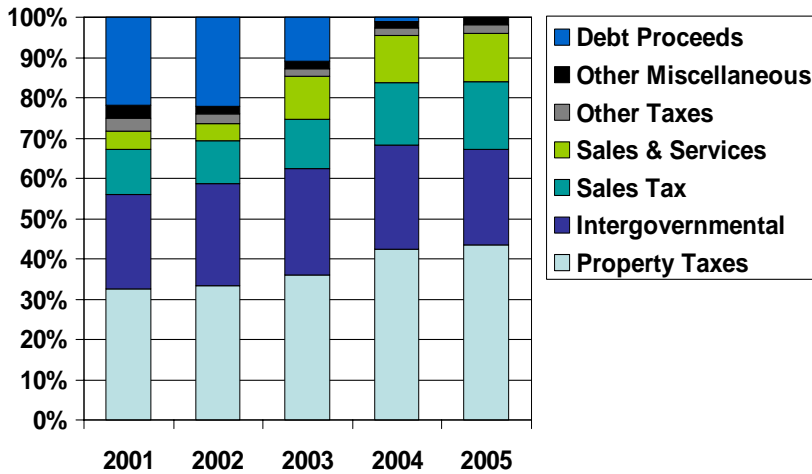
Public and Civic Capital

Per Capita Assessed Valuation



Source: NC Office of the State Treasurer

Per Capita Revenues by Source



Source: NC Office of the State Treasurer

Parks and Recreation Spending Per Capita, 2001-2006

	Per Capita Expenditure
City of Greenville	\$440.54
City of Rocky Mount	\$915.25
City of Wilson	\$565.12
Edgecombe County	\$3.36
Johnston County	\$4.31
Nash County	\$0.00
Pitt County	\$0.64
Wayne County	\$1.72
Wilson County	\$15.79

Source: NC Office of the State Treasurer

Effective Tax Rate

	2006	2005	2004	2003	2002	2001
City of Wilson	0.4263	0.4406	0.4511	0.4530	0.4657	0.470
Wilson County	0.6894	0.6750	0.6911	0.6939	0.6737	0.660
City of Rocky Mount	0.4554	0.4541	0.4554	0.4408	0.4231	0.3233
Nash County	0.6011	0.5993	0.6011	0.6061	0.6347	0.4850
Edgecombe County	0.7907	0.7814	0.7740	0.7926	0.8462	0.6664
City of Greenville	0.5418	0.5537	0.4903	0.4892	0.5052	0.4717
Pitt County	0.6773	0.6922	0.5580	0.5409	0.5586	0.5832
Johnston County	0.7569	0.750	0.7673	0.6566	0.6588	0.6991
Wayne County	0.6947	0.6483	0.6591	0.5215	0.5127	0.5066

Source: NC Office of the State Treasurer